



Fully Managed



Do these issues plague your business?

- **No Technology Plan?** Does your organization lack a strategy for how technology can best serve it into the future?
- **IT Budget Crunch?** Under pressure to reduce IT costs, increase value or maximize profitability?
- **Management Struggles?** Need to find a more efficient way to manage your company's technology?

Program Advantages:

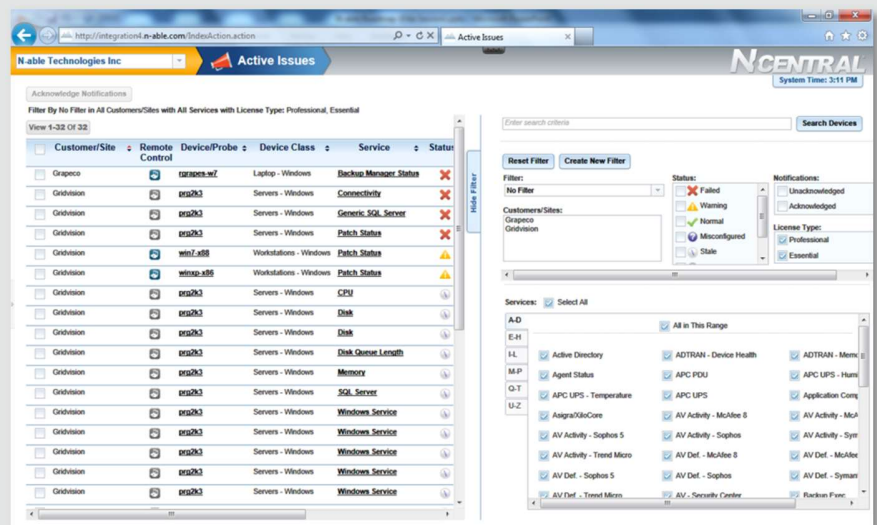
- **Increased Productivity:** Continuous insight into your network lets us reduce the business impact of IT failure by shortening the time from network failure to issue resolution
- **Reduced Business Impact from IT Failures:** Combining preventative maintenance and remote monitoring means we minimize failures that could impact your business. Your network behaves in a stable and reliable manner
- **Reduced Network Downtime Through Proactive Maintenance:** Through regular, preventative maintenance activities designed to keep your network operating efficiently, we reduce the number of emergency incidents you encounter

"The time that I don't waste by ascertaining the issues – the email issue or the IT issue or the printer issue – they just login straight away and resolve it. They are worth their weight in gold"

– Donna Rodrigues – CFO, Ferntree Gully Autosales

A True IT Partnership

Total network peace of mind. Your time is precious. You have more important issues to deal with than your computer network. It is, however, a critical enabler to your business and in need of attention to ensure it's running predictably, optimally and securely. Our fully managed program is the ideal solution for an organization like yours, an organization that demands the utmost in network reliability and quality service.



Total IT support and management for a fixed monthly price – it's that simple. We provide all of the benefits of an internal IT department for a fraction of the price of staffing one yourself. We reduce the business impact of IT failures by minimizing their occurrence, and any unforeseen issues are dealt with as a top priority. All aspects of your network are covered: security, data protection applications and hardware.

When you outsource the management of your important IT resources to us, we look upon this as a partnership. Our comprehensive approach means we are your IT department. By optimizing your network's performance, it will work at the peak efficiency and reliability levels that your business demands, allowing you to focus on running your business, not your network. Security, networking, data protection and user support - we handle it all for a single, predictable price.